

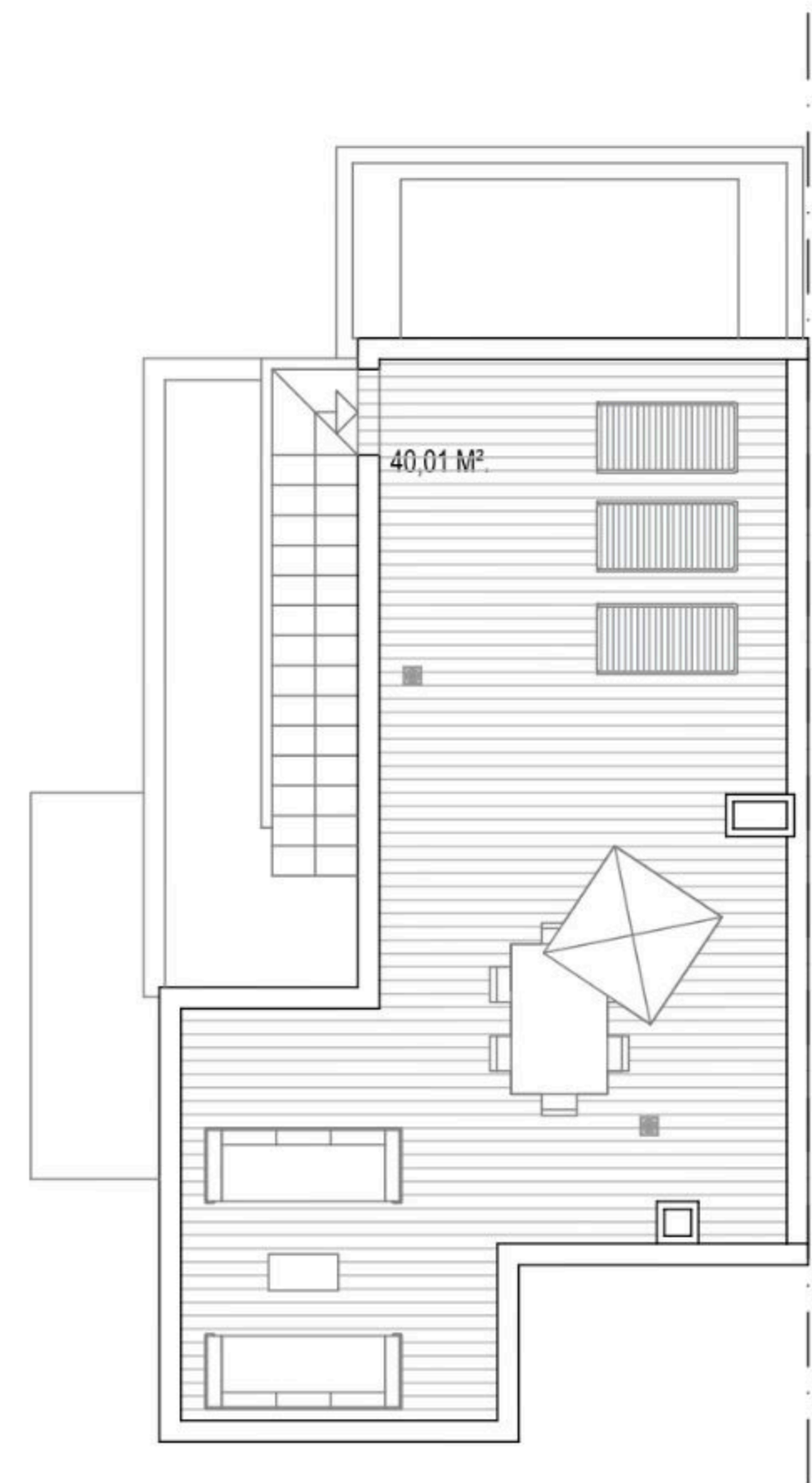
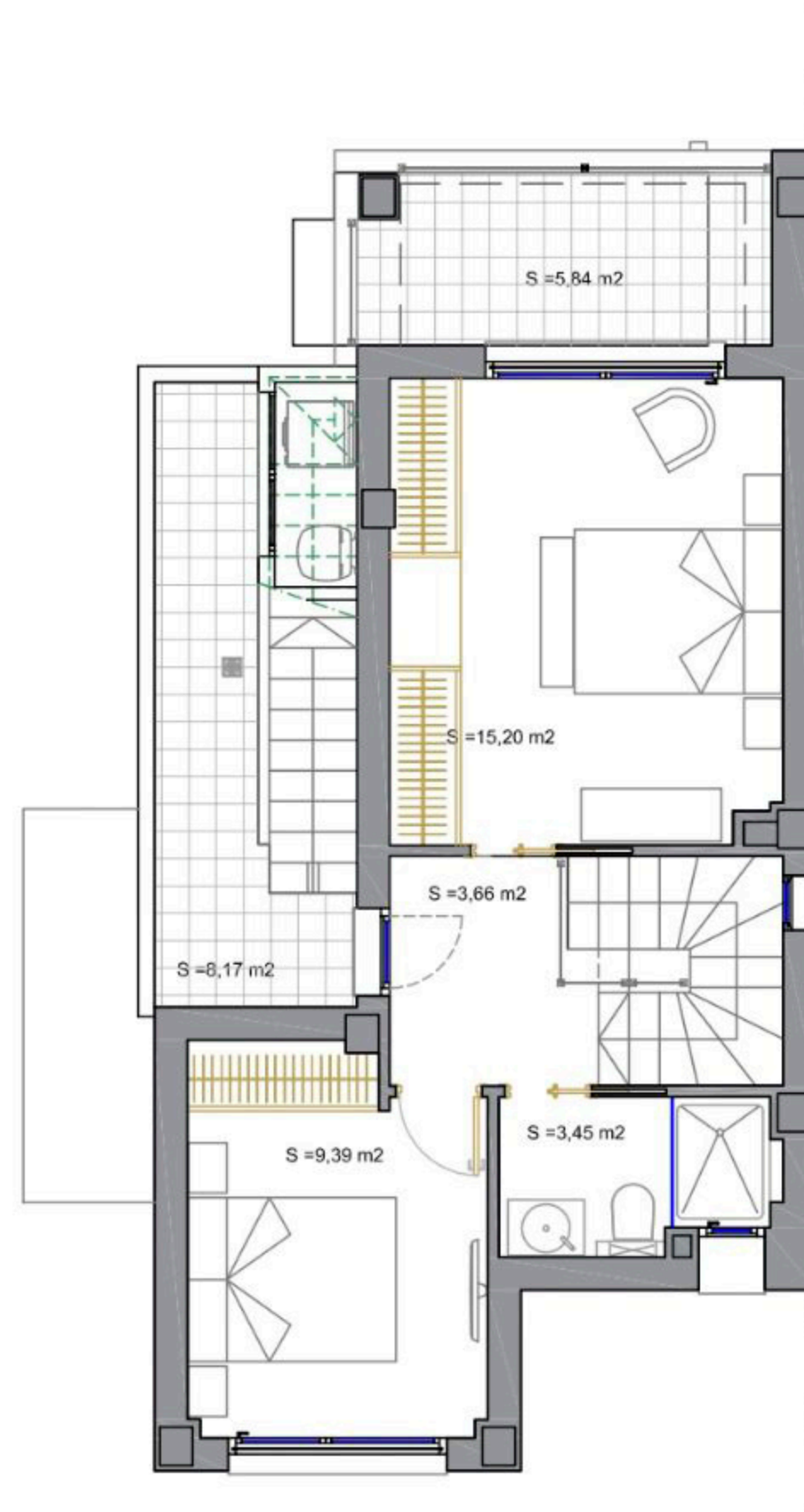
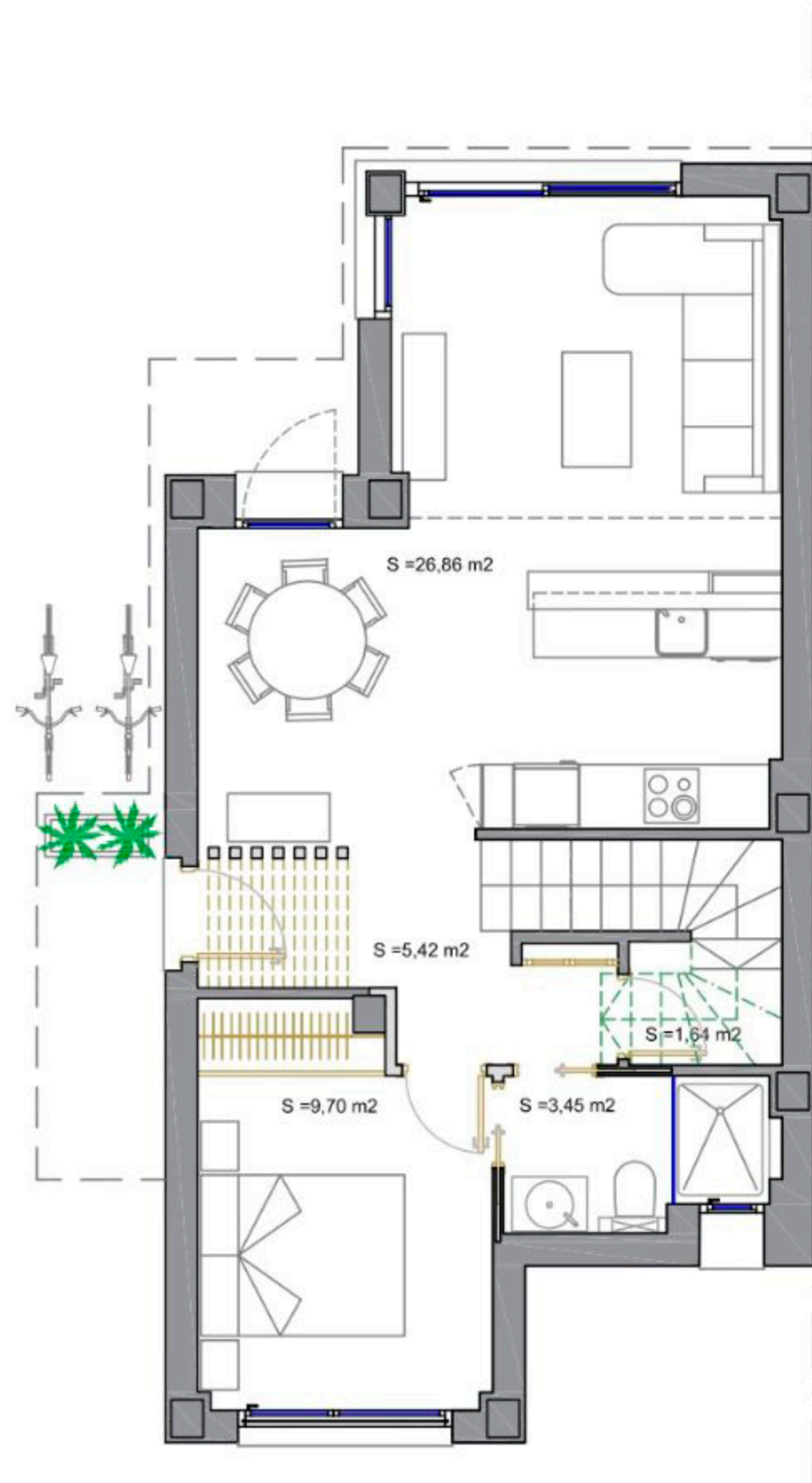
VIVIENDA TIPO A

SUP. CONST. P.B. = 62,44 M<sup>2</sup>.

SUP. CONST. P.1º. = 46,60 M<sup>2</sup>.

TOTAL SUP. CONST. = 109,04 M<sup>2</sup>.





VIVIENDA TIPO A2

SUP. CONST. P.B. = 62,44 M<sup>2</sup>.

SUP. CONST. P.1º. = 46,60 M<sup>2</sup>.

TOTAL SUP. CONST. = 109,04 M<sup>2</sup>.

