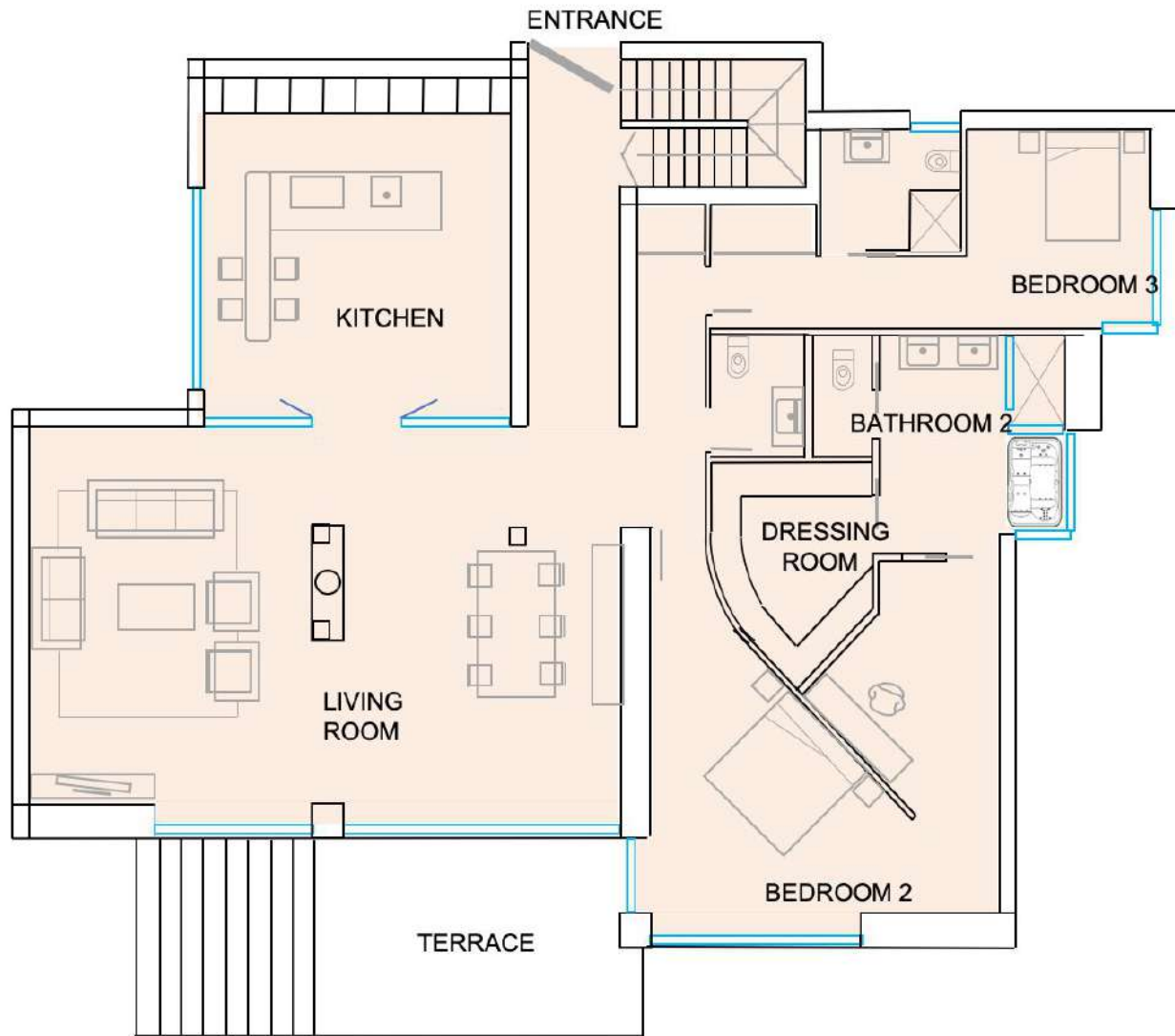


GUEST HOUSE

USEFUL SURFACES

LIVING ROOM	24,67 m ²
BEDROOM	9,81 m ²
KITCHEN	12,43 m ²
BATHROOM	7,53 m ²

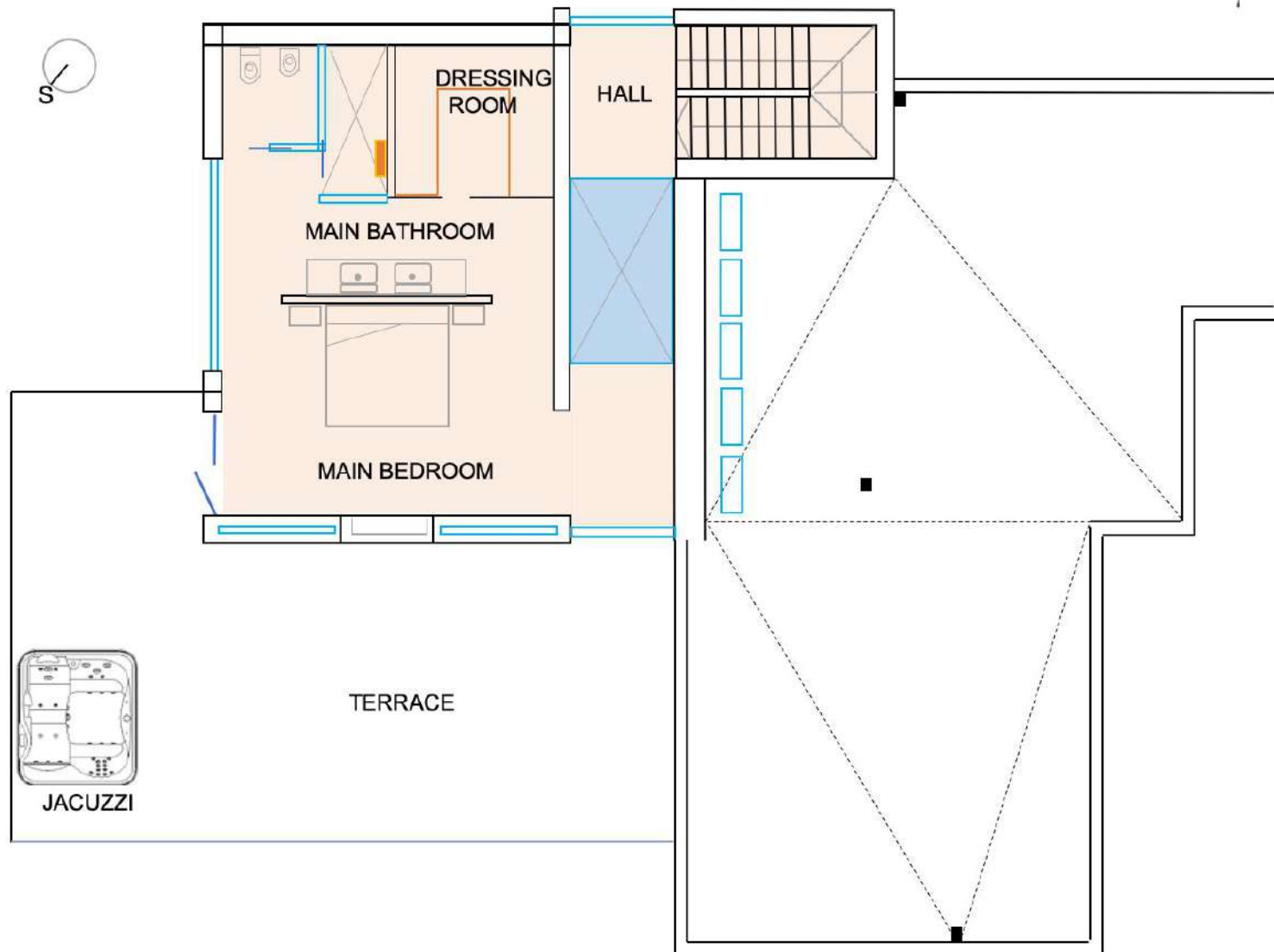
GUEST HOUSE **54,44 m²**



GROUND FLOOR

USEFUL SURFACES

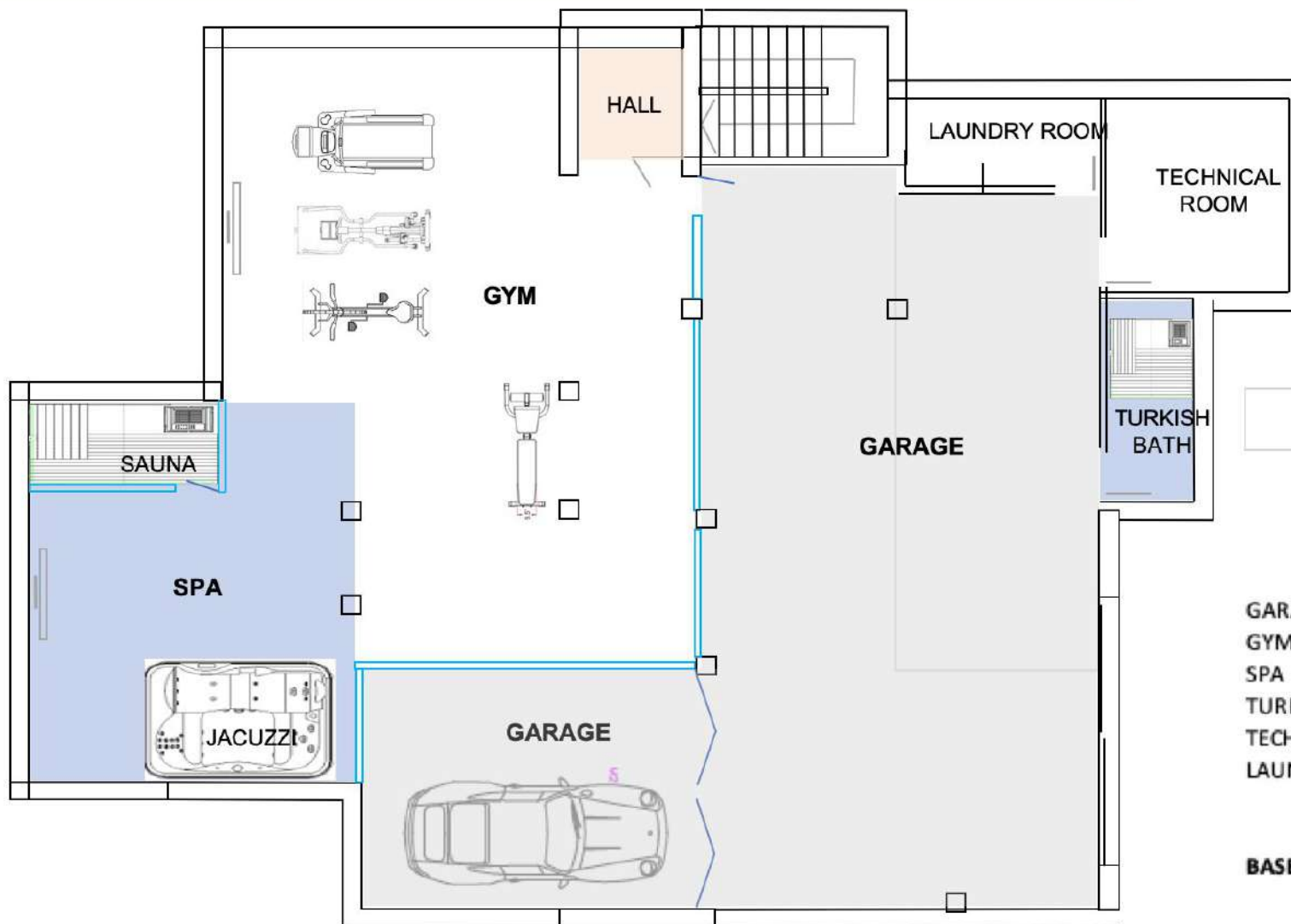
LIVING ROOM	71,01 m ²
KITCHEN	32,32 m ²
BEDROOM 2	34,40 m ²
BATHROOM 2	13,95 m ²
DRESSING ROOM	5,00 m ²
BEDROOM 3	18,32 m ²
BATHROOM 3	5,17 m ²
GUEST BATHROOM	3,56 m ²
TERRACE	19,20 m ²
GROUND FLOOR	204,92 m²



FIRST FLOOR

USEFUL SURFACES

MAIN BEDROOM	22,07 m ²
MAIN BATHROOM	22,32 m ²
HALL	11,09 m ²
TERRACE	58,32 m ²
FIRST FLOOR	55,98 m²



BASEMENT

USEFUL SURFACES

GARAGE	106,20 m ²
GYM	55,20 m ²
SPA	37,61 m ²
TURKISH BATH	5,20 m ²
TECHNICAL ROOM	9,58 m ²
LAUNDRY ROOM	4,60 m ²
BASEMENT	226,78 m²



ACCESS TO GARAGE



am

PARKING

GUEST HOUSE

SWIMMING POOL

VILLA

TERRACE

WINTER SUN TOUR
SUMMER SUN TOUR



PARKING ACCESS



pm

MAIN ENTRANCE

